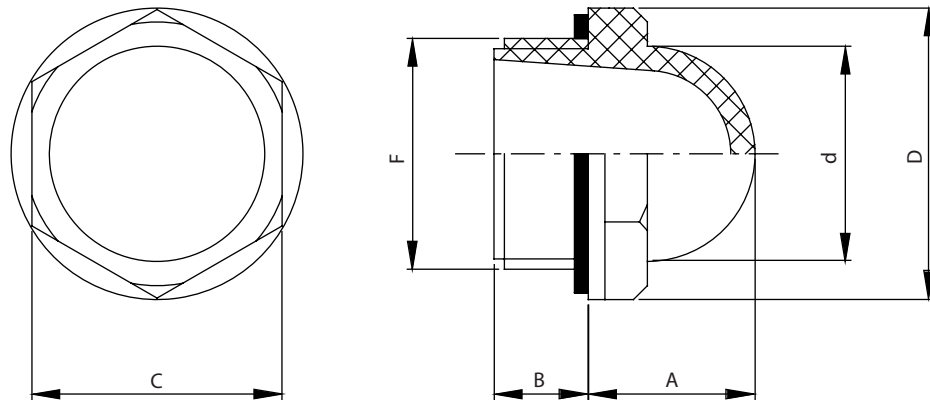


LMA-PC

OIL CIRCULATION SIGHTS



- Body material: Transparent polyamide based (PA-T) technopolymer.

Resistant to solvents, oils with additives, greases, acids and alkali.

Avoid contact with alcohol or detergents containing alcohol.

- Flat packing ring: NBR synthetic rubber.

- Highest temperature of exercise in continue: 80 °C

GAS TYPE	TIGHTENING TORQUE -Nm	F	C	H	L	d	C
LMA-PC 3/8" GAS	5	3/8" GAS	7,5	13	22,5	15	19
LMA-PC 1/2" GAS	6	1/2" GAS	10,5	16	26	19	22
LMA-PC 3/4" GAS	8	3/4" GAS	10,5	19,5	31,5	25	27
LMA-PC 1" GAS	10	1" GAS	11	24	42	31	36
LMA-PC 1"1/4 GAS	15	1"1/4 GAS	11,5	26,5	46,5	38	40,5